

Pacific States Marine Fisheries Commission

John Day Dam Condition Monitoring Weekly Report, #22-10

Report Period: 6/4 – 6/10, 2022

Project Leader: Rick Martinson

Prepared By: Gregory Kovalchuk and Aaron Young



SECTION 1. River Flow and Sampling Results

	Min	Max	Mean		
			Current	Last Week	2021
A. River Flow	386.8	432.1	406.3	333.7	278.7
B. Powerhouse 1	163.9	231.1	190.4	104.3	114.9
C. Powerhouse 2	0.0	0.0	0.0	0.0	0.0
D. Spill (kcfs)	199.3	221.2	214.4	228.1	162.5
% of River Flow	46.1	57.2	52.9	68.4	58.4
E. Water Temp *	57.6	58.3	58.0	55.9	60.3
F. % Saturation *	117.6	120.5	118.6	114.9	105.9

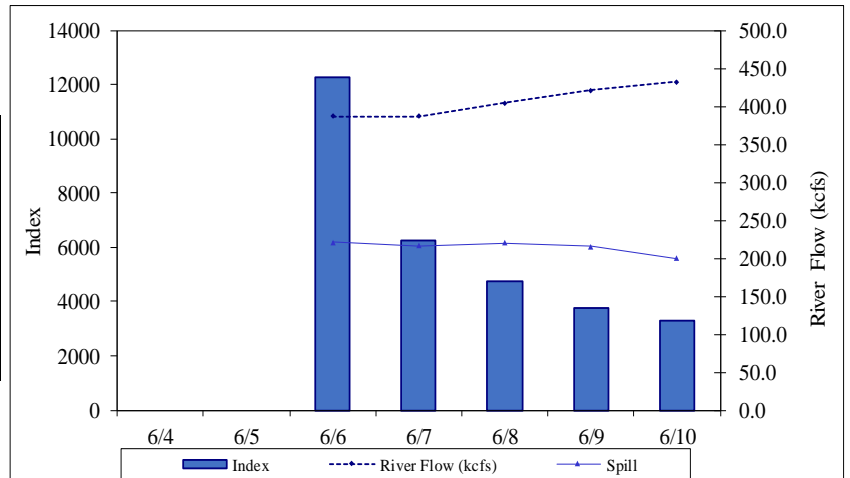
* TDG data from USGS forebay sensor, water temp from lab and USGS sensor.

% SAMPLE COMPOSITION		This Week	Last Week
YEARLING CHINOOK		17.0%	27.3%
SUBYEARLING CHINOOK		56.3%	18.2%
CHINOOK FRY		0.3%	0.0%
UNCLIPPED STEELHEAD		5.0%	6.3%
CLIPPED STEELHEAD		5.1%	6.9%
COHO		6.6%	3.3%
COHO FRY		0.0%	0.0%
SOCKEYE		9.7%	38.0%

YEARLING CHINOOK							SUBYEARLING CHINOOK					COHO				
End Date	Sample Rate	# Smpld	% Desc	% Mort	# Coll	Index	# Smpld	% Desc	% Mort	# Coll	Index	# Smpld	% Desc	% Mort	# Coll	Index
6/4																
6/5																
6/6	3.7%	45	2.2	0.0	1,225	2,878	93	0.0	0.0	2,475	5,815	10	0.0	0.0	275	646
6/7	5.2%	16	0.0	0.0	340	776	95	0.0	0.0	1,790	4,086	2	0.0	0.0	30	68
6/8	8.8%	22	4.5	0.0	265	584	118	0.0	0.8	1,285	2,830	14	0.0	0.0	155	341
6/9	10.0%	33	6.1	0.0	330	676	98	0.0	0.0	980	2,007	15	0.0	6.7	150	307
6/10	10.0%	35	0.0	0.0	350	652	99	1.0	0.0	990	1,844	18	0.0	0.0	180	335
Weekly		151	2.6	0.0	2,510	5,566	503	0.2	0.2	7,520	16,582	59	0.0	1.7	790	1,698
Season to date		4,545	2.3	0.1	46,069	111,509	697	0.3	0.1	11,210	26,979	446	1.8	0.2	5,365	12,871

UNCLIPPED STEELHEAD							CLIPPED STEELHEAD					SOCKEYE				
End Date	Sample Rate	# Smpld	% Desc	% Mort	# Coll	Index	# Smpld	% Desc	% Mort	# Coll	Index	# Smpld	% Desc	% Mort	# Coll	Index
6/4																
6/5																
6/6	3.7%	10	0.0	0.0	275	646	5	0.0	0.0	150	352	32	0.0	0.0	825	1,938
6/7	5.2%	9	0.0	0.0	180	411	5	0.0	0.0	90	205	16	12.5	0.0	310	708
6/8	8.8%	7	0.0	0.0	100	220	12	8.3	0.0	165	363	17	11.8	0.0	185	407
6/9	10.0%	9	0.0	0.0	90	184	16	12.5	0.0	160	328	13	15.4	0.0	130	266
6/10	10.0%	9	0.0	0.0	90	168	7	0.0	0.0	70	130	8	0.0	0.0	80	149
Weekly		44	0.0	0.0	735	1,629	45	6.7	0.0	635	1,379	86	7.0	0.0	1,530	3,469
Season to date		294	1.7	0.0	3,961	10,261	1,036	6.4	0.2	11,083	27,155	1,096	3.2	0.2	23,486	58,750

TOTAL						
End Date	Sample Rate	# Smpld	% Desc	% Mort	# Coll	Index
6/4						
6/5						
6/6	3.7%	195	0.5	0.0	5,225	12,277
6/7	5.2%	143	1.4	0.0	2,740	6,254
6/8	8.8%	190	2.1	0.5	2,155	4,746
6/9	10.0%	184	3.3	0.5	1,840	3,769
6/10	10.0%	176	0.6	0.0	1,760	3,278
Weekly		888	1.6	0.2	13,720	30,323
Season to date		8,114	2.7	0.1	101,174	247,525



Notes: Condition percentages are calculated from sample numbers.

Subyearling chinook and coho include fry.

Pacific Lamprey							Western Brook		
Macrophthalmia				Ammocoetes			Ammocoetes		
End Date	# Smpld	% Mort	# Coll	# Smpld	% Mort	# Coll	# Smpld	% Mort	# Coll
6/4	0	0.0	0	0	0.0	0	0	0	0
6/5	0	0.0	0	0	0.0	0	0	0	0
6/6	0	0.0	0	0	0.0	0	0	0	0
6/7	0	0.0	0	0	0.0	0	0	0	0
6/8	4	0.0	40	2	0.0	20	0	0	0
6/9	30	0.0	300	7	0.0	70	0	0	0
6/10	25	0.0	250	7	0.0	70	0	0	0
Weekly	59	0.0	590	16	0.0	160	0	0	0
Season to date	116	0.9	1,406	19	0.0	237	0	0	0

SECTION 2. Smolt and Lamprey Condition Monitoring Summary

		Yearling Chinook		Subyearling Chinook		Unclipped Steelhead		Clipped Steelhead		Coho		Sockeye	
		This Week	Last Week	This Week	Last Week	This Week	Last Week	This Week	Last Week	This Week	Last Week	This Week	Last Week
SAMPLE #		151	253	499	169	44	58	45	64	58	31	86	353
DESCALING	3-19%	5.3%	4.3%	2.4%	1.8%	2.3%	3.4%	11.1%	10.9%	8.6%	6.5%	4.7%	4.2%
	>20%	1.3%		0.4%	0.6%							4.7%	2.5%
	Pred. Desc.	1.3%	2.4%				3.4%	6.7%	9.4%		3.2%	2.3%	1.4%
INJURY	BODY		0.4%		0.6%				3.1%	1.7%	6.5%		0.3%
	EYE	0.7%	0.4%		0.6%								
	HEAD												
	OPERC.				0.6%							3.5%	2.0%
	FIN		2.4%	0.8%	1.2%		3.4%			8.6%		1.2%	0.8%
OTHER CONDITIONS	POPEYE												
	PINK FIN												
	Fin Discolor.												
	FIN HEM.			0.8%								1.2%	0.6%
DISEASE	Columnaris												
	FUNGUS	0.7%					1.7%		1.6%	1.7%			
	BKD												0.3%
	PARASITES					2.3%	3.4%						
	DEFORMITY	0.7%		2.0%	0.6%	2.3%							
	EYE HEM.	0.7%	0.8%									1.2%	0.3%
PREDATION	BIRD	3.3%	2.8%	0.8%		4.5%	5.2%	20.0%	9.4%	3.4%	6.5%	3.5%	0.6%
	FISH	1.3%	2.0%	0.6%	0.6%	2.3%	1.7%		3.1%				2.3%
	LAMPREY			0.2%									
	OTHER												
end dates		6/10	6/3										

			INJURY					DISEASE and OTHER CONDITIONS					PREDATION	
MP- Macrophthalmia	End Date	SAMPLE #	BODY	EYE	HEAD	FIN	POPEYE	FIN HEM	Columnaris	FUNGUS	DEFORMITY	EYE HEM.	BIRD	FISH
This Week	6/10	59	1.7%			1.7%		3.4%		5.1%			22.0%	
Last Week	6/3	6												
AP - Ammocoetes	End Date	SAMPLE #												
This Week	6/10	16												
Last Week	6/3	0												

SECTION 3. Incidental Summary

	Bass Largemouth	Bass Smallmouth	Bluegill and Pumpkinseed	Bullhead	Carp	Catfish, Channel	Chiselmouth	Crappie species
This Week	0	4	0	1	0	0	0	1
Season to Date	0	6	6	1	1	0	0	5

	Dace - Longnose	Dace - Speckled	Chinook Jack	Goldfish	Lamprey Adult	Northern Pikeminno	Peamouth	Perch Yellow
This Week	0	0	0	0	0	0	0	27
Season to Date	0	0	0	1	0	0	0	296

	Redside Shiner	Sand Roller	Sculpin species	Stickleback 3 spine	Sucker species	Shad Adult	Shad Juvenile	Sturgeon White
This Week	0	0	0	1	0	0	0	0
Season to Date	0	0	8	6	0	0	0	0

	Trout Bull	Trout Cutthroat	Trout Rainbow	Walleye	Whitefish Mountain	Siberian Prawn	Chum Salmon	Banded Killifish
This Week	0	0	0	3	0	15	0	4
Season to Date	0	0	0	18	0	76	0	4

SECTION 4. Facility Operations

Condition Monitoring at John Day Dam is scheduled to sample Monday through Friday until mid-June. Samples will be taken from the Juvenile Bypass System between approximately 0700 and 1300 hrs. Collection, Index, and River flow estimates and averages are for the sample period only. The Condition Exams will target approximately 100 of the predominant species of out-migrant, currently Subyearling Fall Chinook (56.3% composition) and Yearling Spring Chinook (17% composition). Debris at the separator bars and in the sample holding tank started out low at the beginning of the week but increased significantly with the higher river flows the last few days and consisted of sticks, plastic, and pieces of terrestrial vegetation. Of note, we sampled more than half of the season total for juvenile Pacific lamprey this week, which coincided with the maximum river flows reaching 432 kcfs on 10 June.

SECTION 5. Research

Genetic fin clip samples were taken from 59 Pacific Lamprey macrophthalmia and 16 Pacific Lamprey ammocoetes for the Columbia River Inter-Tribal Fish Commission during this report period.

SECTION 6. Pictures



Subyearling fall Chinook (*Oncorhynchus tshawytscha*) smolt, approximately 115 mm fork length, showing a curved spine deformity, sampled on 9 June, 2022 at the John Day Dam Smolt Facility.



Subyearling fall Chinook (*Oncorhynchus tshawytscha*) smolt, approximately 95 mm fork length, showing stunted growth deformity, sampled on 8 June, 2022 at the John Day Dam Smolt Facility.